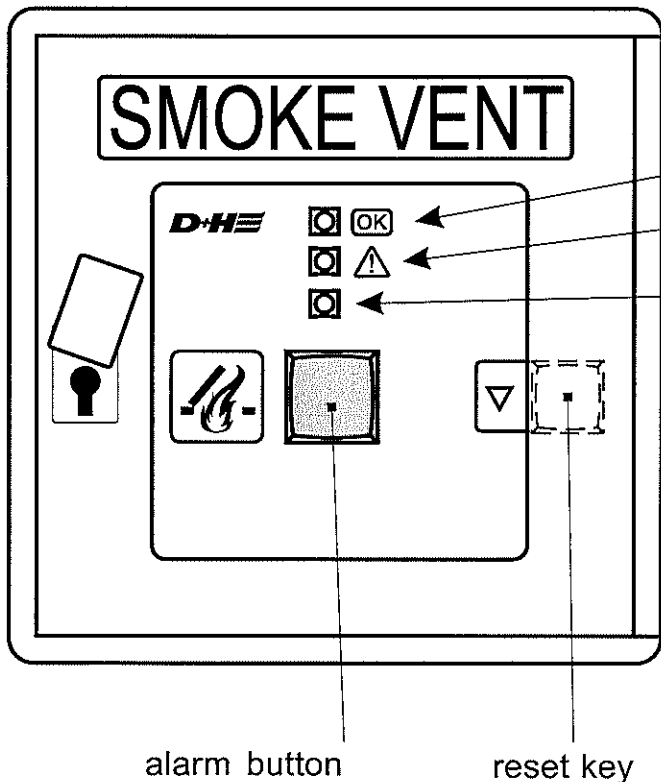


Operating Instructions for D+H Smoke Vent Systems

RZN 4102/08-K V2, RZN 4402/04-K, RZN 4304/08-M, RZN 4300-E

**Safety system protects human life and material assets!
Once a year functional testing by a specialist company,
authorized by the manufacturer.**



green pilot LED (operation)
 yellow pilot LED (flashing) (malfunction)
 red pilot LED (alarm)

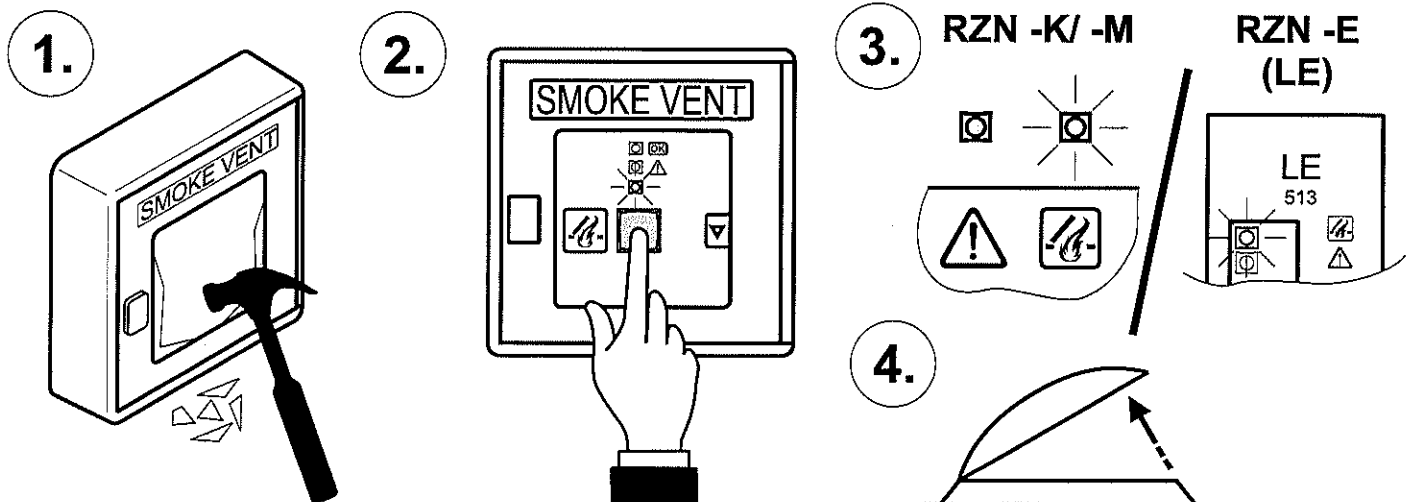
S. E. S.
 P.O. BOX 9714
 MALAHIDE, Co. DUBLIN, IRELAND
 Phone 01 8453341 Fax 01 8453679
 Mobile 0872 554353
 MICHAEL HOWELL

alarm button

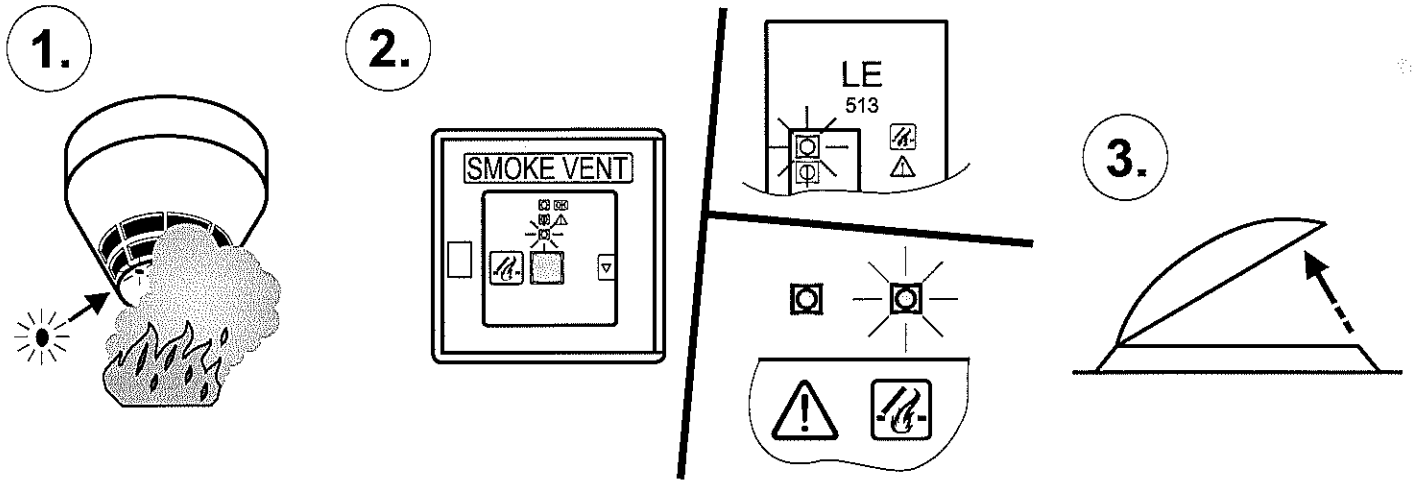
reset key

Release in case of alarm

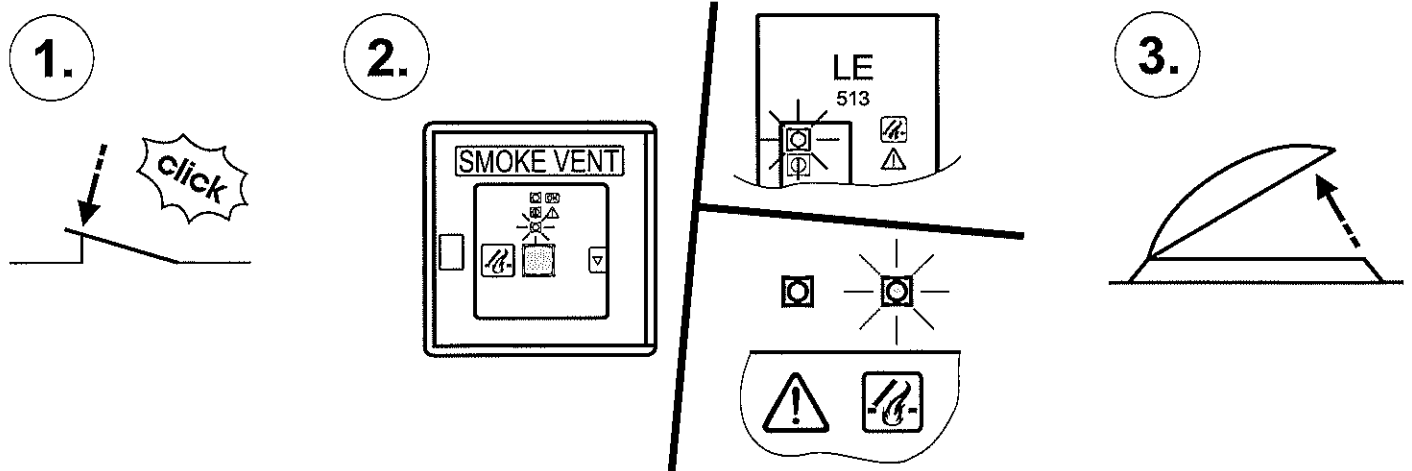
Manual opening by smoke vent button:



Automatic opening by fire detector:

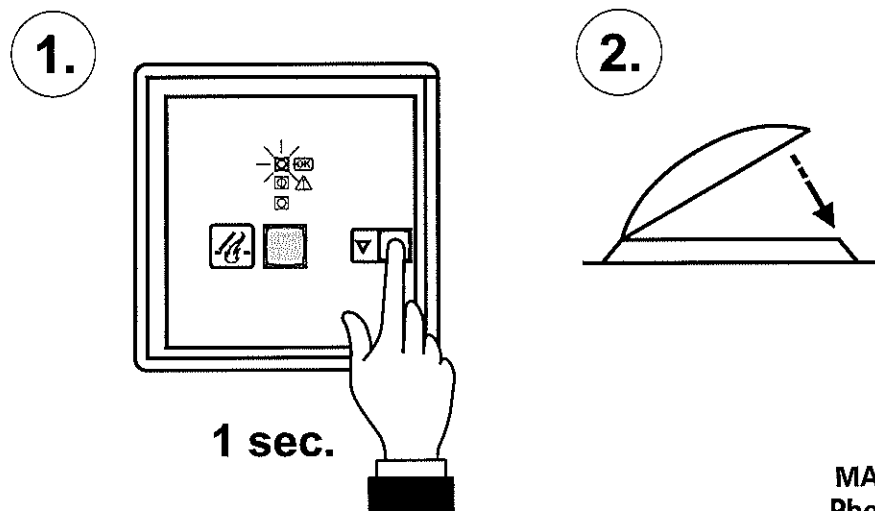


Automatic opening by external control:



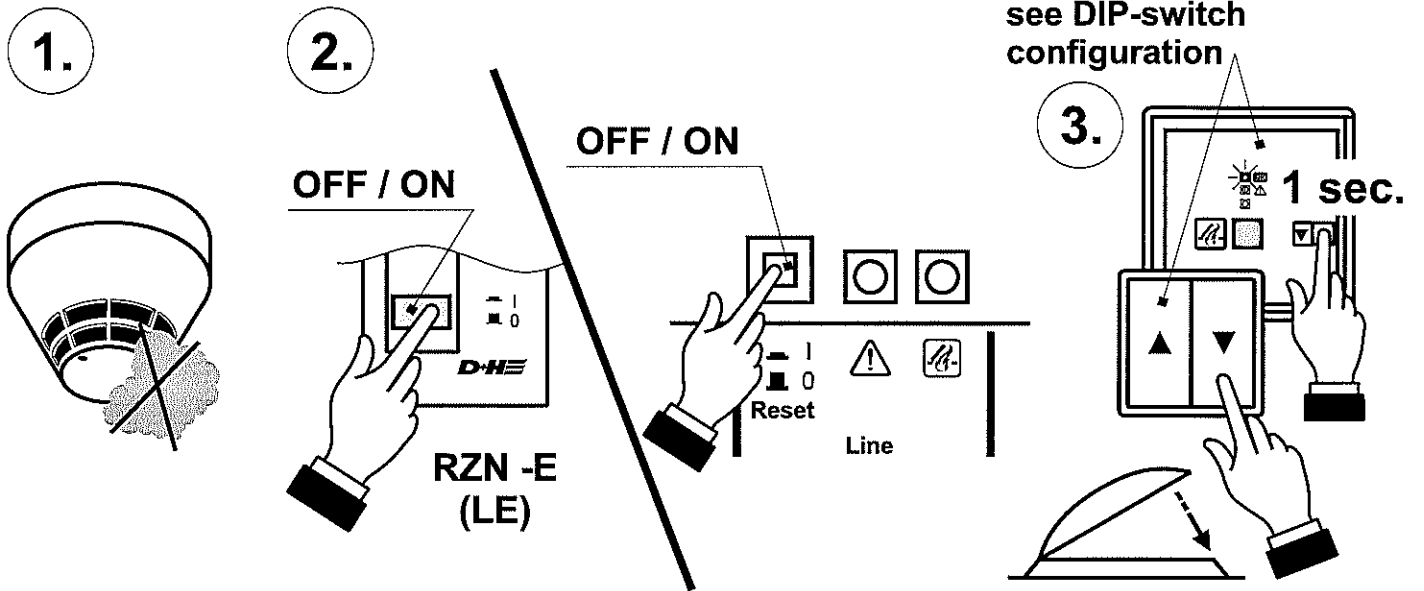
Closing after alarm

With manual release:

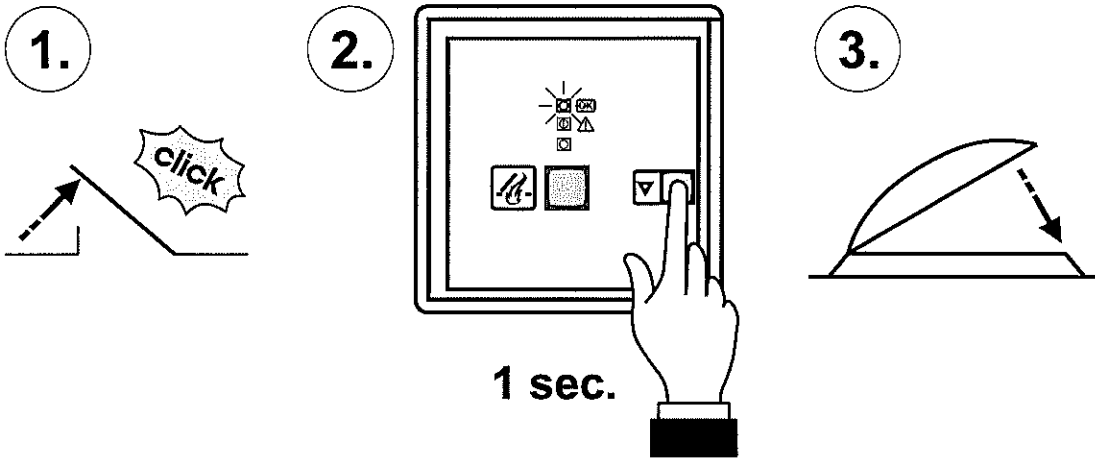


S. E. S.
P.O. BOX 9714
MALAHIDE, Co. DUBLIN, IRELAND
Phone 01 8453341 Fax 01 8453679
Mobile 0872 554353
MICHAEL HOWELL

In case of automatic release by detector:

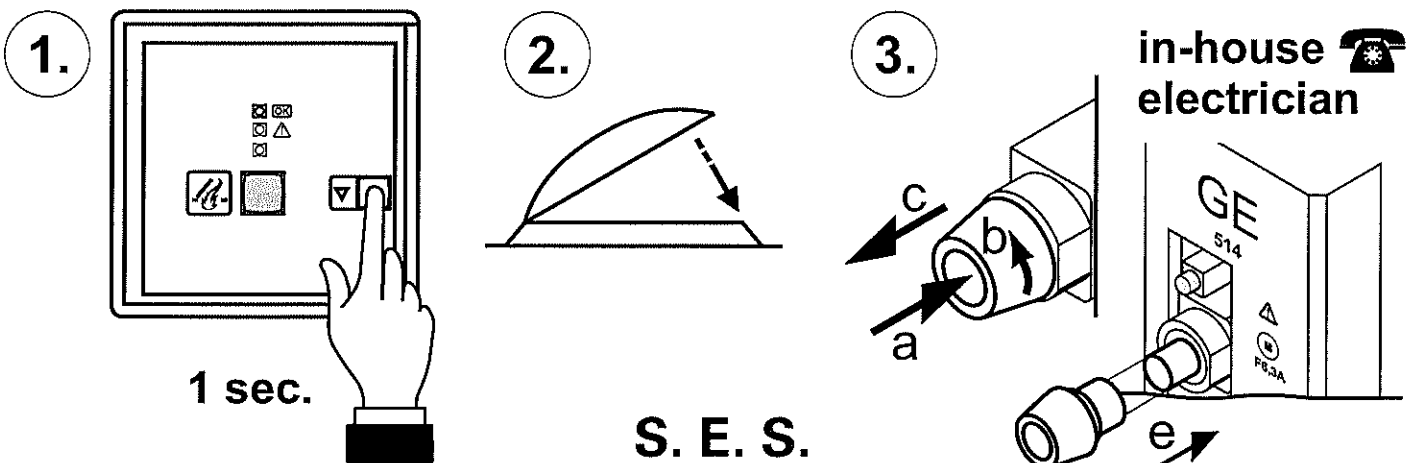


In case of automatic release by external control:



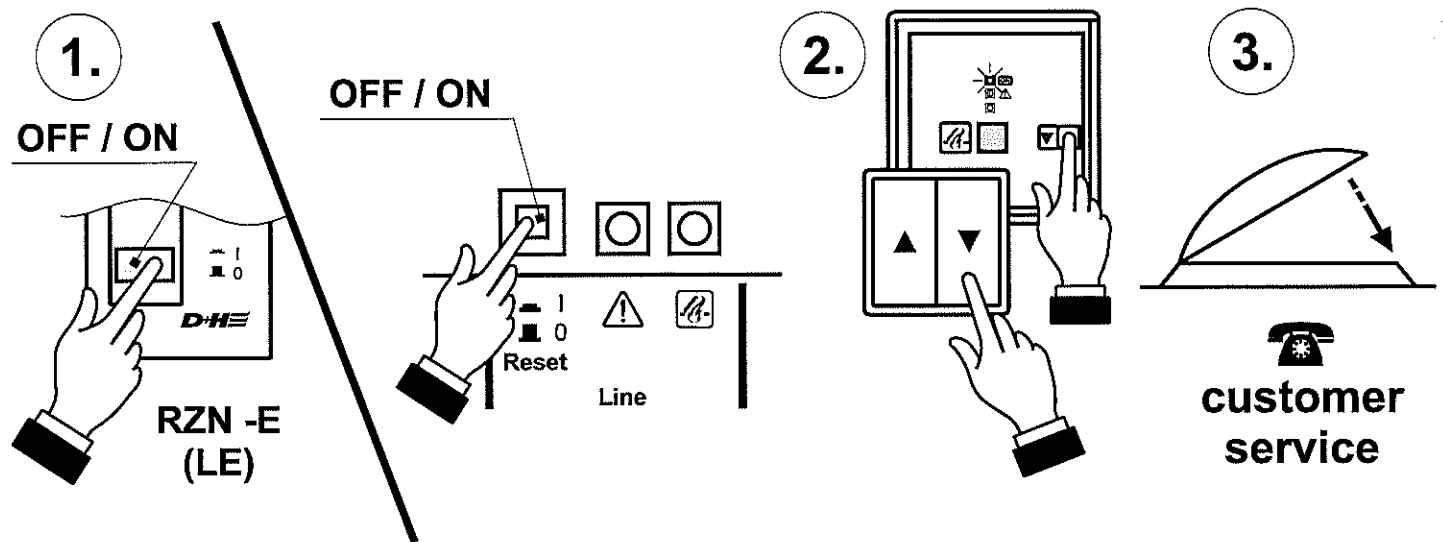
Emergency closing

In case of power failure:

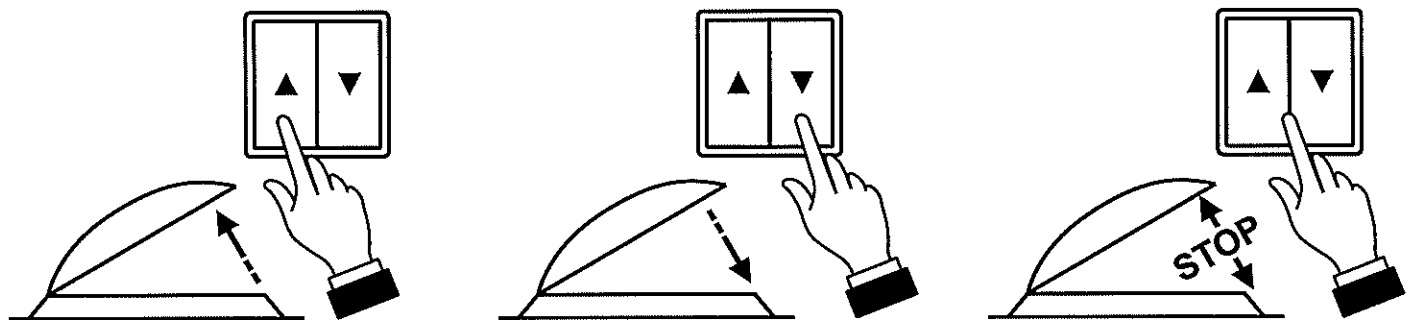


S. E. S.
 P.O. BOX 9714
 MALAHIDE, Co. DUBLIN, IRELAND
 Phone 01 8453341 Fax 01 8453679
 Mobile 0872 554353
 MICHAEL HOWELL

in case of non-resettable alarm:



Day-to-day ventilation



Only if wind detector or rain detector available

With RZN 4102/08-K V2, RZN 4402/04-K, RZN 4304/08-M, RZN 4300-E (without WE 516):
In case of rain, relay points will switch in rain detector. Wind velocities can be adjusted to 4/6 Bft.

If the weather automatic is switched on via vent button **LT 43U-W (optional)**, the system will automatically close in case of wind or rain. The system will not automatically open again, if wind or rain has stopped. Opening of the system for ventilation via vent button.

If alarm is released by a smoke and heat vent system, the system will open also in case of wind and rain.

Do not ventilate via smoke vent button, because otherwise there would be a danger of damage by wind or water.

The weather automatic can be switched-off at vent button **LT 43U-W (optional)**, if gap ventilation is required in case of bad weather.

Gap ventilation is not possible in case of bad weather, if no vent button LT 43U-W available.

For further informations see **information for use REM 42 and WRG 82.**